

# MONTHLY MEMBERSHIP PROGRESS REPORT

LOCATION NEW JERSEY

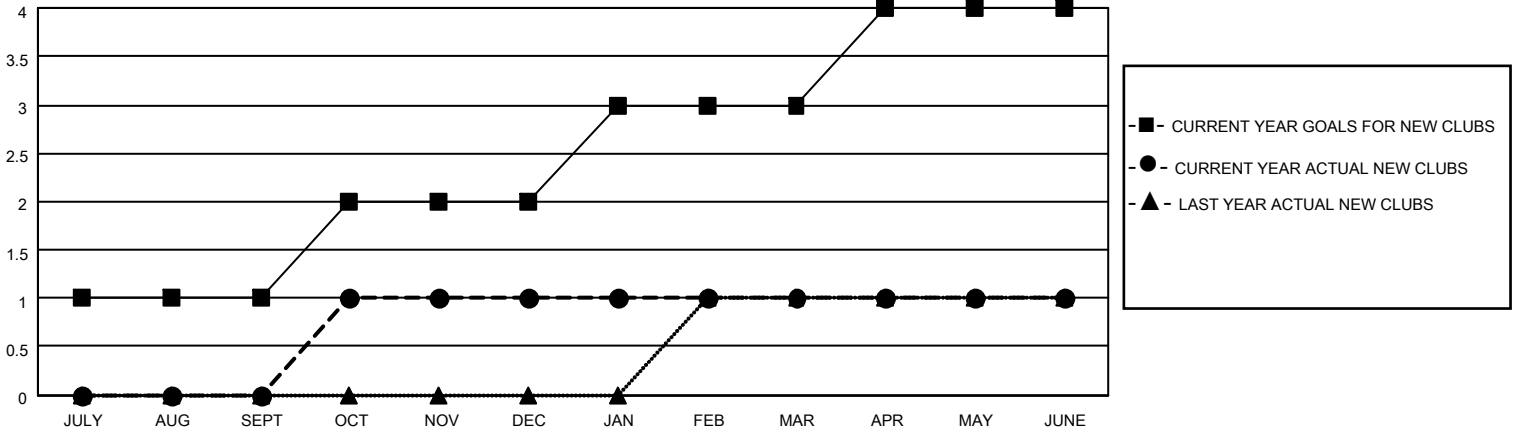
District 16 J

Results as of: 6/30/2022

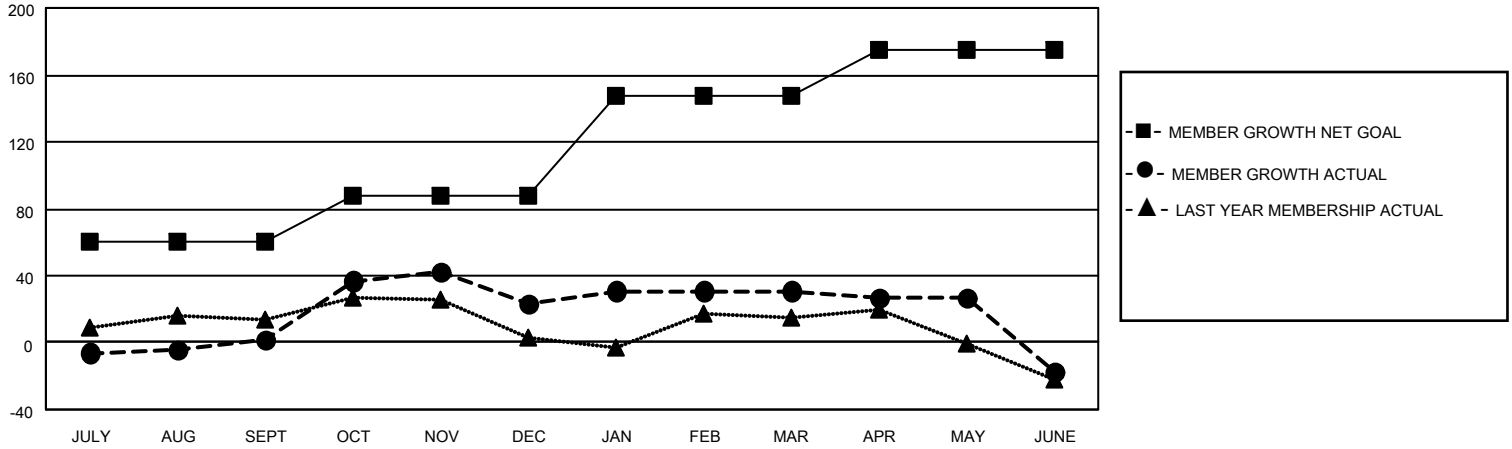
Clubs			
RESULTS FOR 2021-2022			
QUARTER	NEW CLUB GOAL	NEW CLUBS	DROPPED CLUBS
JULY/AUG/SEPT	1	0	1
OCT/NOV/DEC	1	1	0
JAN/FEB/MAR	1	0	0
APR/MAY/JUNE	1	0	0

Members			
RESULTS FOR 2021-2022			
QUARTER	MEMBER GROWTH NET GOAL	MEMBER GROWTH ACTUAL	DROPPED MEMBERS ACTUAL (including transfers)
JULY/AUG/SEPT	60	28	24
OCT/NOV/DEC	28	57	35
JAN/FEB/MAR	60	24	16
APR/MAY/JUNE	27	49	86

**GOALS AND ACTUAL NEW CLUBS CUMULATIVE**



**GOALS AND ACTUAL MEMBERS CUMULATIVE**



**DROPPED CLUBS: 1**

**29 CLUBS OF 59 ADDED 1 OR MORE NEW MEMBERS**

**GENDER DISTRIBUTION**

MALE	866 (61.24%)
FEMALE	548 (38.76%)
NON BINARY	0 (0.00%)
PREFER NOT TO ANSWER	0 (0.00%)

**DROPPED MEMBERS**

[CLICK HERE FOR CUMULATIVE MEMBERSHIP DATA](#)

DECEASED	16
CLUB CANCELLED	10
OTHER	135
<b>TOTAL</b>	<b>161</b>

TOTAL FAMILY UNIT MEMBERS 328

FAMILY MEMBERS PAYING HALF DUES 172